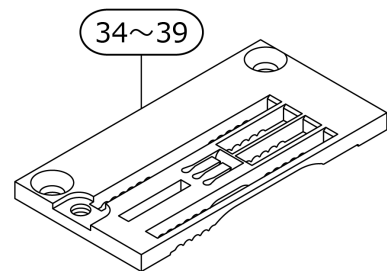
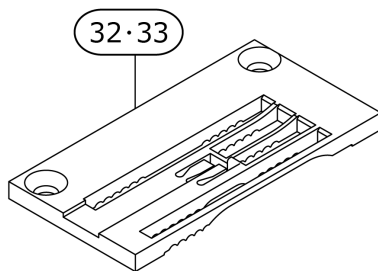
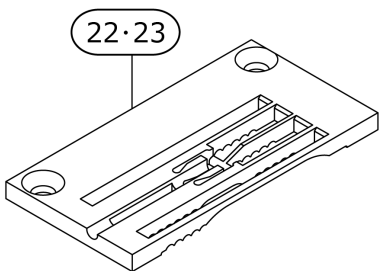
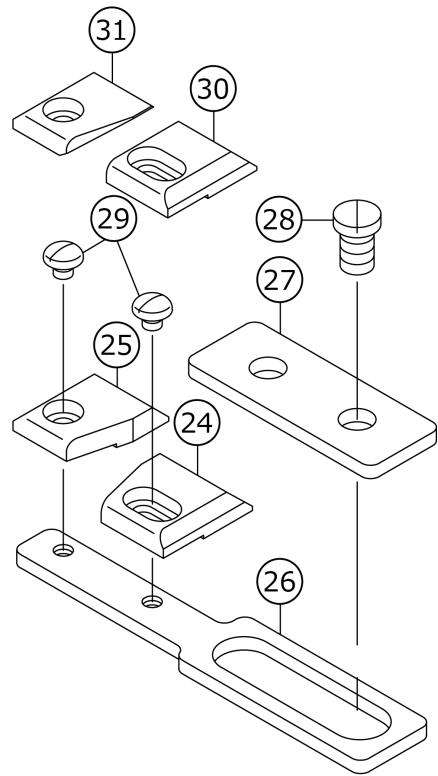
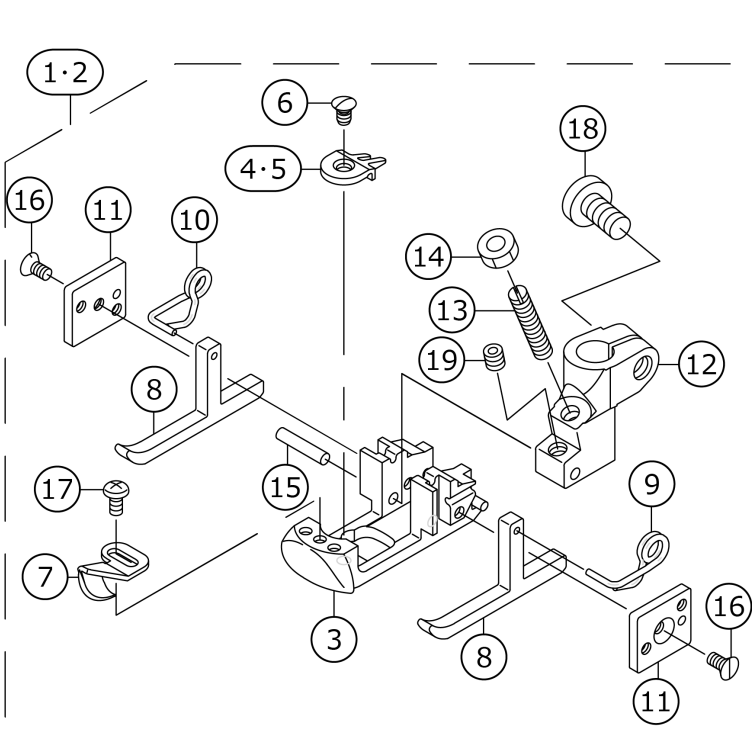
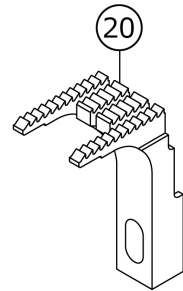
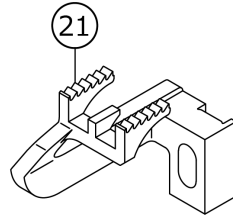
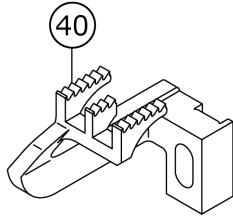
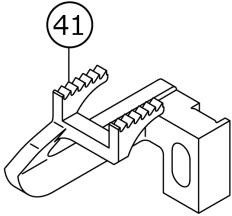


MF-7605-K02

MF-7000 SERIES (MF-7600-K02)



No.	parts number	parts name	comment	child	num
1	US0050320BU	PRESSER FOOT ASM.	FOR 4.8MM		1.00
2	US0050320BV	PRESSER FOOT ASM.	FOR 5.6MM		1.00
3	US0050330ET	PRESSER FOOT			1.00
4	US050397A48	STITCH TONGUE	FOR 4.8MM		1.00
5	30150106	STITCH TONGUE	FOR 5.6MM		1.00
6	30098008	SCREW			1.00
7	US0050330EJ	CLOTH GUIDE	ACCESSORIES PART		1.00
8	US0050330EK	YIELDING SECTION			2.00
9	US0050330EL	SPRING,RIGHT			1.00
10	US0050330EM	SPRING,LEFT			1.00
11	US0050330EN	PRESSER FOOT GUIDE PLATE			2.00
12	US0050330EP	PRESSER FOOT HINGE			1.00
13	US0018C1475	SCREW			1.00
14	NM6030250SC	NUT M3X0.5			1.00
15	PH0200102C0	PARALLEL PIN			1.00
16	SM1020450TP	SCREW M2 L=4			2.00
17	SM4020401SC	SCREW M2 L=4	ACCESSORIES PART		1.00
18	SM7040800SL	SCREW			1.00
19	SM8030382TP	SCREW M3X0.5 L=3			1.00
20	US0050305BT	MAIN FEED DOG			1.00
21	US0050326BM	FEED DOG			1.00
22	US050324D48	THROAT PLATE FOR COVERING	FOR 4.8MM		1.00
23	US050324D56	THROAT PLATE FOR COVERING	FOR 5.6MM		1.00
24	US0050337AG	GUIDE,RIGHT(FLATTENING OUT)			1.00
25	US0050337AH	GUIDE,LEFT(FLATTENING OUT)			1.00
26	US0050383AA	GUIDE BRACKET			1.00
27	US0050337AF	GUIDE PLATE			1.00
28	30220107	SCREW			2.00
29	SS4080310SP	SCREW 1/8-44 L=3.4			2.00
30	30159206	GUIDE,RIGHT(FOLDING OVER)	OPTION		1.00
31	30159305	GUIDE,LEFT(FOLDING OVER)	OPTION		1.00
32	US50324DA48	THROAT PLATE FOR COVERING	OPTION (FOR D48)		1.00
33	US50324DA56	THROAT PLATE FOR COVERING	OPTION (FOR D56)		1.00
34	US050324A48	THROAT PLATE FOR HEMMING	OPTION (FOR A48)		1.00
35	US050324B48	THROAT PLATE (FOR HEMMING)	OPTION (FOR B48)		1.00
36	US050324C48	THROAT PLATE FOR HEMMING	OPTION (FOR C56)		1.00
37	US050324A56	THROAT PLATE FOR HEMMING	OPTION (FOR A56)		1.00
38	US050324B56	THROAT PLATE FOR HEMMING	OPTION (FOR B56)		1.00
39	US050324C56	THROAT PLATE FOR HEMMING	OPTION (FOR C56)		1.00
40	30159404	DIFFERENTIAL FEED DOG	FOR HEMMING		1.00
41	30160006	DIFFERENTIAL FEED DOG	FOR FOLDING OVER OVER -LOCK SEAM		1.00

HOW TO MAKE USE OF THIS PARTS LIST

- 1.As to "#01" and "#02" refer to the "Note" given at the bottom of the respective pages.
- 2.Codes on the "Qty" column
 - Each numeral indicates the number of parts required.
 - "0.1" and "2.5" indicate the length (in meters) of the respective parts.
- 3.Parentheses mean that the corresponding part is a subpart that constructs an assembly part.
- 4.Dotted lines on the Figures indicate assembly parts.

1. リストページの# 0 1、# 0 2の印は、ページ下の"注記"の説明を参照下さい。
2. 数量欄の数字は、個数を表し、0. 1、2. 5等の数値は、長さ（単位メートル）を表します。
3. 数量欄の（ ）は、組部品を構成している子部品であることを意味します。
4. イラストページの-----枠は、組構成であることを意味します。

ALL PARTS NOT MENTIONED IN THIS PARTS LIST ARE SAME AS THOSE OF
MODEL MF-7600-L01. OTHER PARTS LIST RELATED TO THIS MODEL.
*MF-7000 SERIES(MF-7600-L01)(NO.1135 PART NO.29199304)

このパーツリスト記載以外の部品はMF-7600-L01と共通です。
この機種に関連するパーツリストとして下記のパーツリストがあります。
*MF-7000シリーズ(MF-7600-L01)
(NO. 1135 品番29199304)

